

KAWAI

D G 3 0

D I G I T A L G R A N D



A TRULY GRAND IMPRESSION

A modern digital piano that leaves a truly grand impression – this is the bold concept behind the new DG30. This striking instrument combines Kawai's authentic digital piano keyboard and sound technologies and marries them with a contemporary grand piano-like cabinet, finished in luxurious ebony polish.

Like a piece of fine furniture, the DG30 will surely complement the interior of almost any room, while its compact size and shape allow this impressive instrument to occupy less space than even the smallest baby grands.

Introducing the new Kawai DG30 – a modern digital piano that leaves a truly grand impression.



MODERN DIGITAL • GRAND IMPRESSION

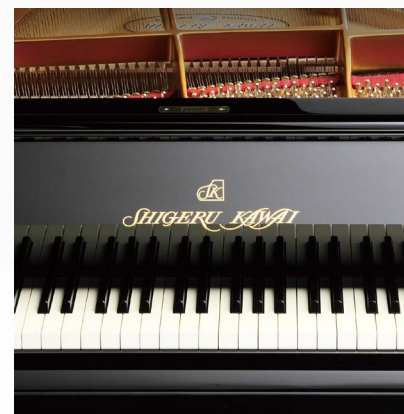
THE TOUCH OF A GRAND PIANO



The DG30's *Responsive Hammer III* keyboard action recreates the smooth and responsive touch of an acoustic grand piano, allowing pianists the ability to play and perform with confidence and sensitivity.

The keys are grade-weighted to mirror the heavier bass and lighter treble hammers found on a grand piano, and utilise triple-sensor detection for enhanced responsiveness and accuracy. In addition, let-off simulation reproduces the subtle 'notch' sensation felt when playing the keys of a grand piano softly.

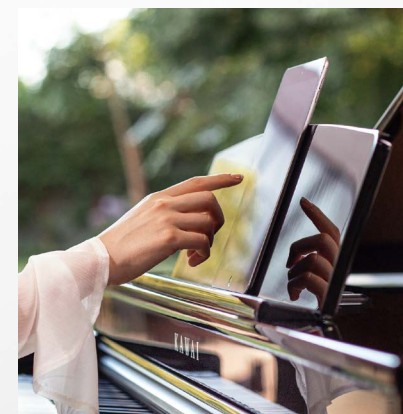
THE PREMIER PIANO OF JAPAN



Eponymously named after the company's second president, the Shigeru Kawai range of luxury grand pianos were conceived as the next step in evolving the art of the piano. Each world-class instrument is hand-crafted using the finest available materials, to ensure optimum touch, tone, and artistic expression.

The flagship Shigeru Kawai SK-EX concert grand piano has received universal acclaim for its exceptional tonal clarity and broad dynamic range, earning a reputation among some academics as 'the premier piano of Japan'.

INTEGRATED BLUETOOTH CONNECTIVITY



In addition to standard USB and MIDI jacks for connecting to computers or other instruments, the DG30 digital grand also features integrated Bluetooth® MIDI and Audio technologies that allow the instrument to communicate with supported smart devices wirelessly.

Once paired with a phone or tablet, DG30 owners can enjoy a wide variety of exciting music-related apps, or stream audio from songs and videos directly through the piano's premium amplifier and speaker system without the need to connect additional cables.

GRAND APPEARANCE, COMPACT SIZE



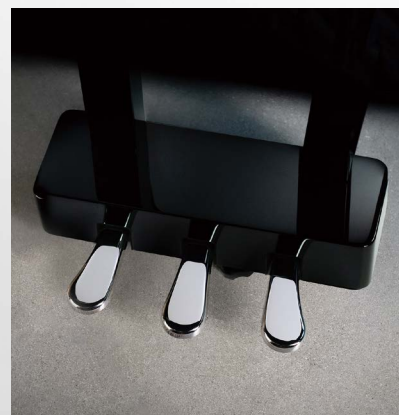
The DG30's attractive, grand piano-like cabinet is finished in luxurious Ebony Polish, with silver-chrome fittings completing a modern, elegant look. Opening the instrument's topboard reveals a beautifully polished wooden soundboard with a decorative braid trim.

Despite its grand appearance, the DG30 is a surprisingly compact instrument, occupying a depth of just 34 ¼ inches (87 cm). This relatively small footprint allows the piano to be enjoyed in smaller spaces, while still presenting a sophisticated, professional character.

GRAND FEEL PEDAL SYSTEM

In addition to featuring an acoustic grand piano-like keyboard action, the DG30 also include Kawai's highly authentic *Grand Feel Pedal System*.

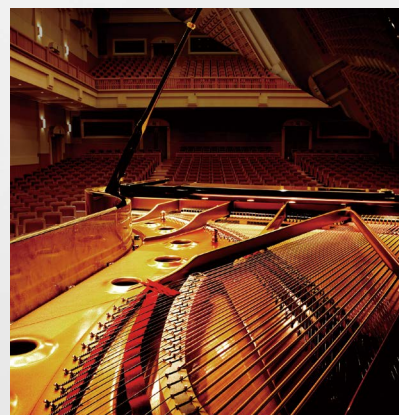
This unique feature accurately replicates the position and individual weighting of the damper, soft, and sostenuto pedals of Kawai's flagship Shigeru Kawai SK-EX concert grand piano. It is also possible to adjust specific characteristics of the damper and soft pedals for even greater realism using the instrument's advanced *Virtual Technician* parameters.



HARMONIC IMAGING TECHNOLOGY

The rich, expressive sound of the SK-EX concert grand piano is at the heart of the DG30 digital grand, with all eighty-eight keys of this world-class instrument painstakingly recorded, meticulously analysed, and accurately reproduced as high-fidelity digital waveforms.

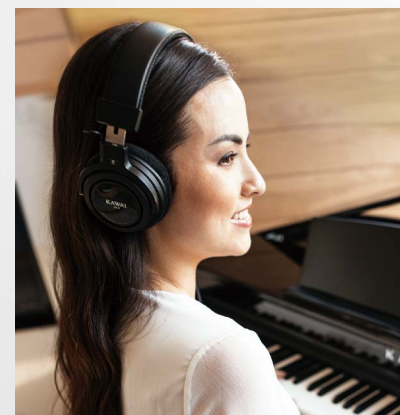
The SK-EX is captured at a variety of different volume levels from pianissimo to fortissimo. This allows an accurate acoustic portrait of the instrument to be assembled using Kawai's *Progressive Harmonic Imaging* technology, ensuring smooth tonal transitions throughout the dynamic range.



SUPERIOR HEADPHONE EXPERIENCE

The DG30's *Spatial Headphone Sound* (SHS) technology enhances the depth and realism of the instrument's sound when listening through headphones or earphones. The player can select one of three different acoustic presets that adjust the spatial positioning of the sound, while also helping to reduce auditory fatigue when using headphones or earphones for extended periods of time.

In addition, the DG30 also allows players to select from a variety of headphone types (Open, Semi-open, Closed, In-Ear, Canal, etc.) for an optimised listening experience.



TWO-POSITION TOPBOARD

The DG30 digital grand features two lid props, allowing the topboard angle to be adjusted depending on one's preferred visual aesthetic, or tonal character.

Using the longer prop sets the instrument's topboard to the fully-open position, allowing the sound produced by the piano's soundboard-mounted speakers to project fully, for a bright and clear tonal character. Alternatively, the shorter prop sets the topboard in a partially closed position, resulting in a darker, more mellow quality that may be preferable for practising.



DG30 TECHNICAL SPECIFICATIONS

Keyboard	Action Type	Responsive Hammer III	
	Key Surfaces	Ivory Touch	
	Other Features	Graded hammers, Counterweights, Triple sensor, Let-off simulation	
Sound	Sound Engine	Progressive Harmonic Imaging, 88-key piano sampling	
	Grand Piano Source	Shigeru Kawai SK-EX, Shigeru Kawai SK-5, Kawai EX	
	No. of Sounds	355 voices (incl. 9 drum kits), GM2 compatible	
	Polyphony	max. 256 notes	
	Virtual Technician	Smart Mode: 10 types Advanced Mode: 19 parameters	
	Reverb & Effects	Reverb: 6 types, Effects: 24 types	
Audio System	Output Power	40 W (20 W x 2)	
	Speakers	13 cm x 2 (woofer), 10 cm x 2 (top speaker)	
Recorder	Internal Recorder	10 song, 2 track recorder – max. 90,000 notes	
	USB Recorder	Play & Record MP3/WAV/SMF, Overdub MP3/WAV	
	Metronome	10 time signatures, 100 drum rhythms	
Internal Songs	Demo Songs	32 songs	
	Concert Magic	176 songs	
	Lesson Function	12 lesson books **	
Features	Keyboard Modes	Dual, Split, 4Hands (Volume/Balance adjustable)	
	Display	128 x 64 pixel OLED	
	Memories	16 Registration memories (8 x 2)	
	Spatial Headphone Sound	Normal, Forward, Wide, Off	
	Pedals	Damper (half-pedal support), Soft, Sostenuto – Grand Feel Pedal System	
	App Support	PianoRemote (iOS/Android), PiaBookPlayer (iOS/Android)	
Connectivity	Headphones	1 x ¼", 1 x ⅛" STEREO	
	Audio	LINE IN (¼" L/MONO, R), LINE OUT (¼" L/MONO, R)	
	MIDI/USB	MIDI (IN/OUT), USB to Host, USB to Device	
	Bluetooth* *	Bluetooth MIDI, Bluetooth Audio	
	Power	DC IN (20 W consumption)	
Design	Music Rest	Wide type, adjustable angle (3 positions)	
	Dimensions	Topboard closed (not including music rest): 1475 (W) x 870 (D) x 890 (H) mm 58" (W) x 34 ¼" (D) x 35" (H)	Topboard fully open: 1475 (W) x 870 (D) x 1365 (H) mm 58" (W) x 34 ¼" (D) x 53 ¾" (H)
	Weight	80 kg / 176 lbs.	

Specifications are subject to change without notice. | * Availability of Bluetooth function dependent on market location. | ** Lesson books sold separately.

KAWAI
THE FUTURE OF THE PIANO

